

[This Photo](#) by Unknown Author is licensed under [CC BY-SA](#)

# SCENIC SCIENCE LESSONS 4B



# Abraham's Journey

- From Ur to Harran
  - More than 1125 km
- From Harran to Shechem
  - More than 625 km

**TOTAL EQUALS 1750 km**

Lack of Food in Canaan, led Abraham to Egypt. egypt and back was another 1000 km

**ALL TOTAL 2750 km**

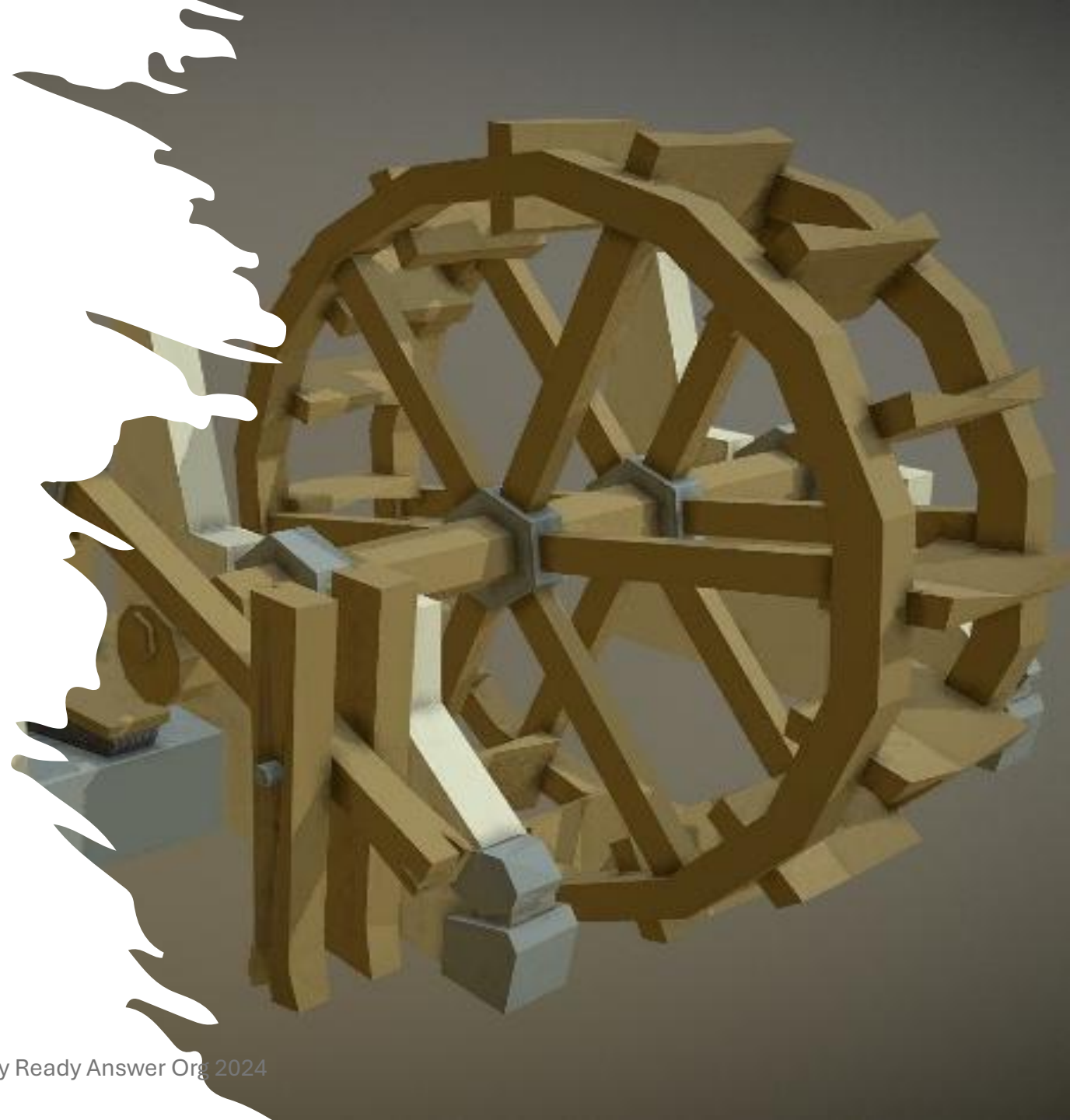




# WHEELS MOVE (KINETIC) TO DO WORK AND SAVE OUR ENERGY.

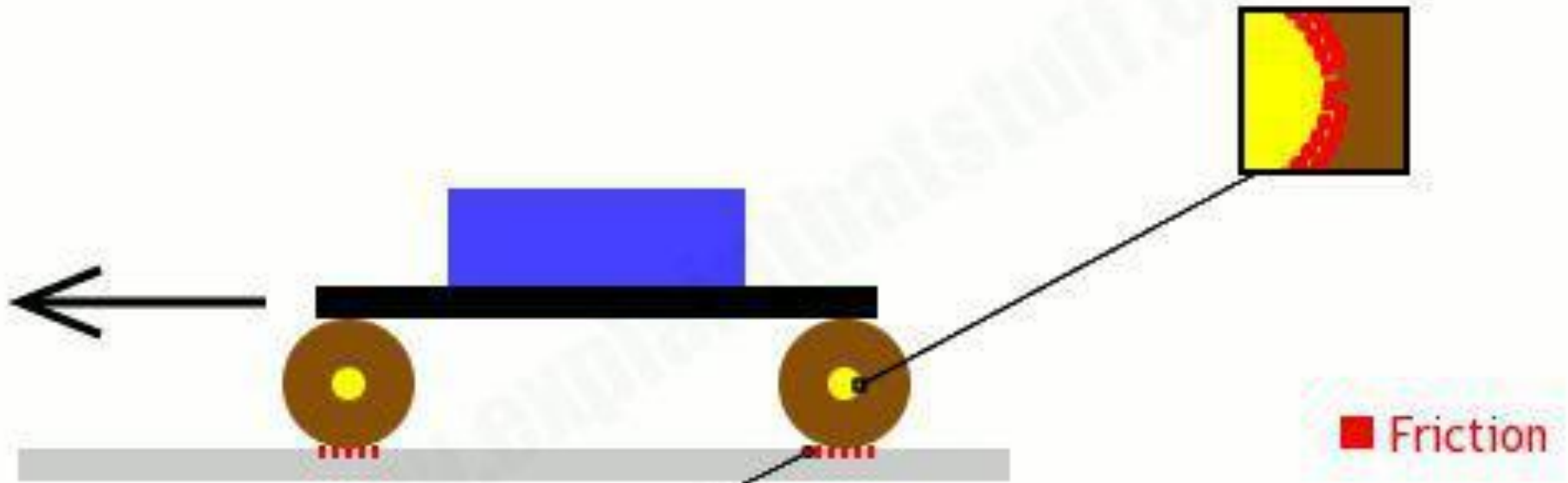
All resources stem from God's creation. It's important to remember the Lord's hand in all things.

**John 8:32** *Then you will know the truth, and the truth will set you free.*



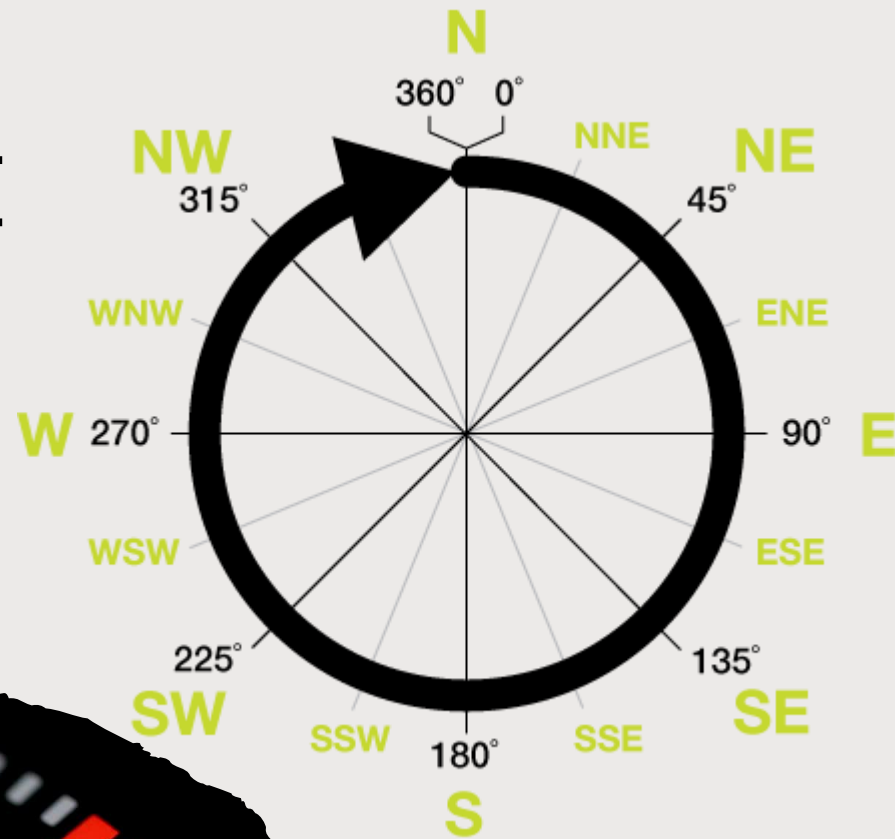
# The physics of wheels

Friction between wheels and axles is much lower so box is far easier to move



Friction gives outside edges of wheels grip on road

WHEELS ROTATE  
at various  
RPM's or RPS's



## ONE REVOLUTION

one FULL turn!

- **RPM's** the number of revolutions per minute or rev/min or r/m
- **RPS's** the number of revolutions per second or rev/sec or r/s





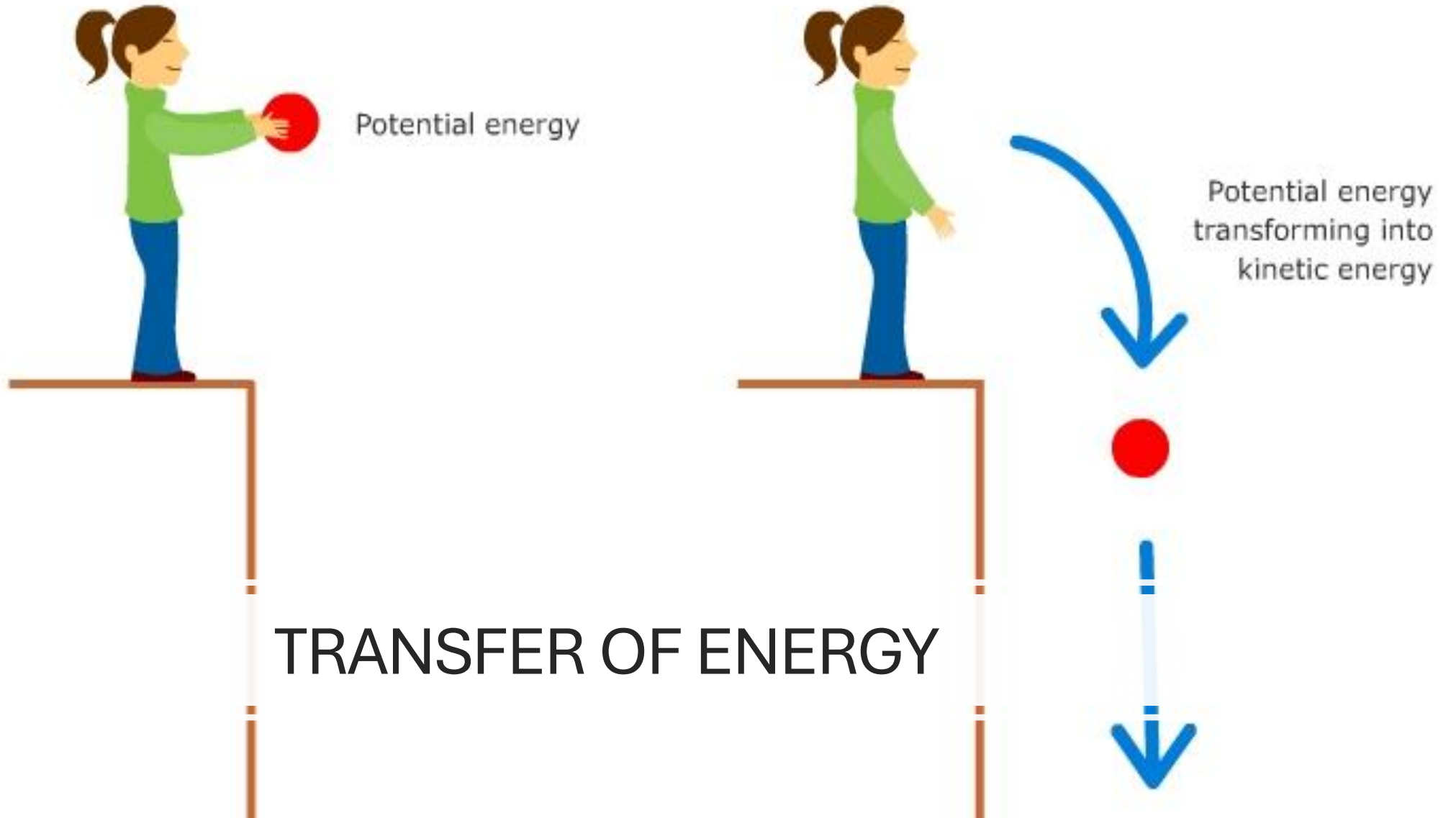
# Energy is Needed to do Work

Ox need calories

Windmills need wind energy

Waterwheels need running water (or ox power 😊)

# ENERGY TYPES – POTENTIAL AND KINETIC

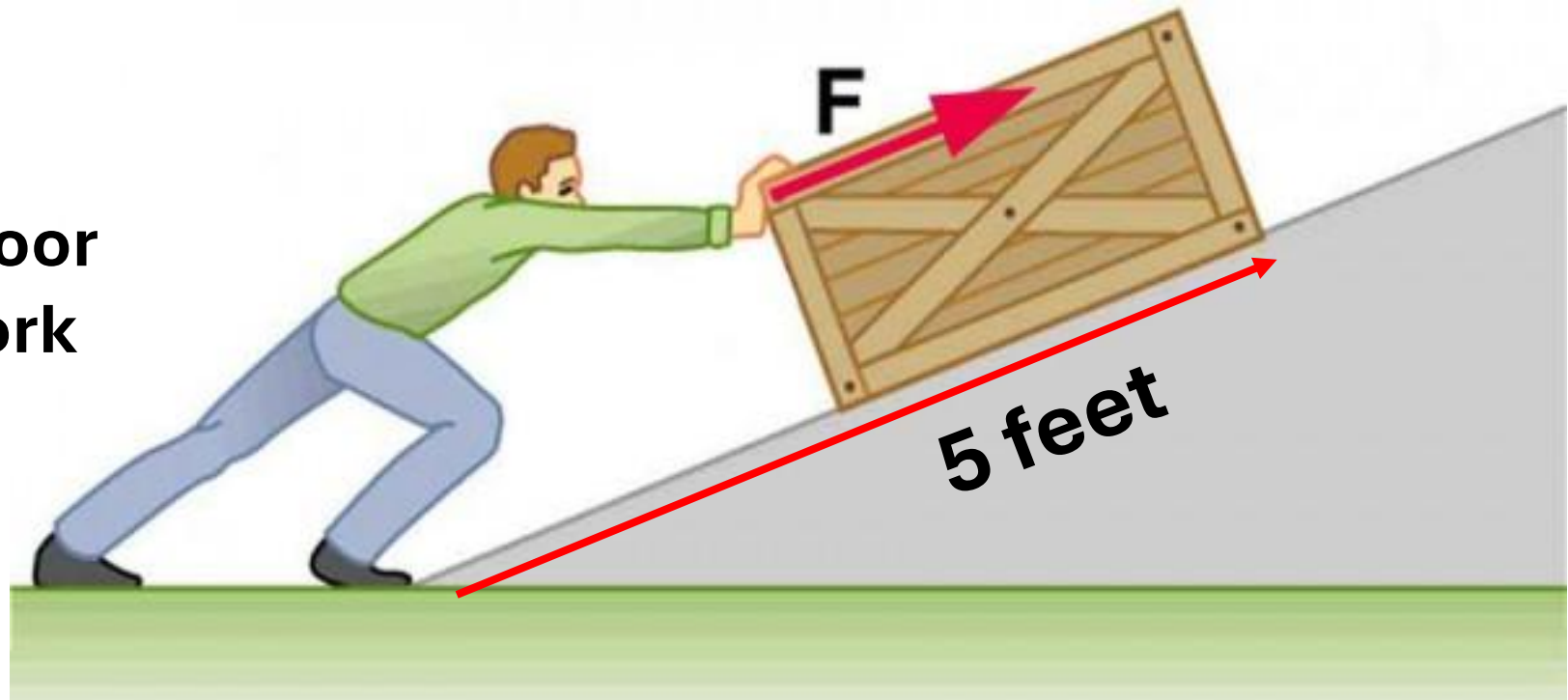


**Energy is the ability to do work. Work changes things.**

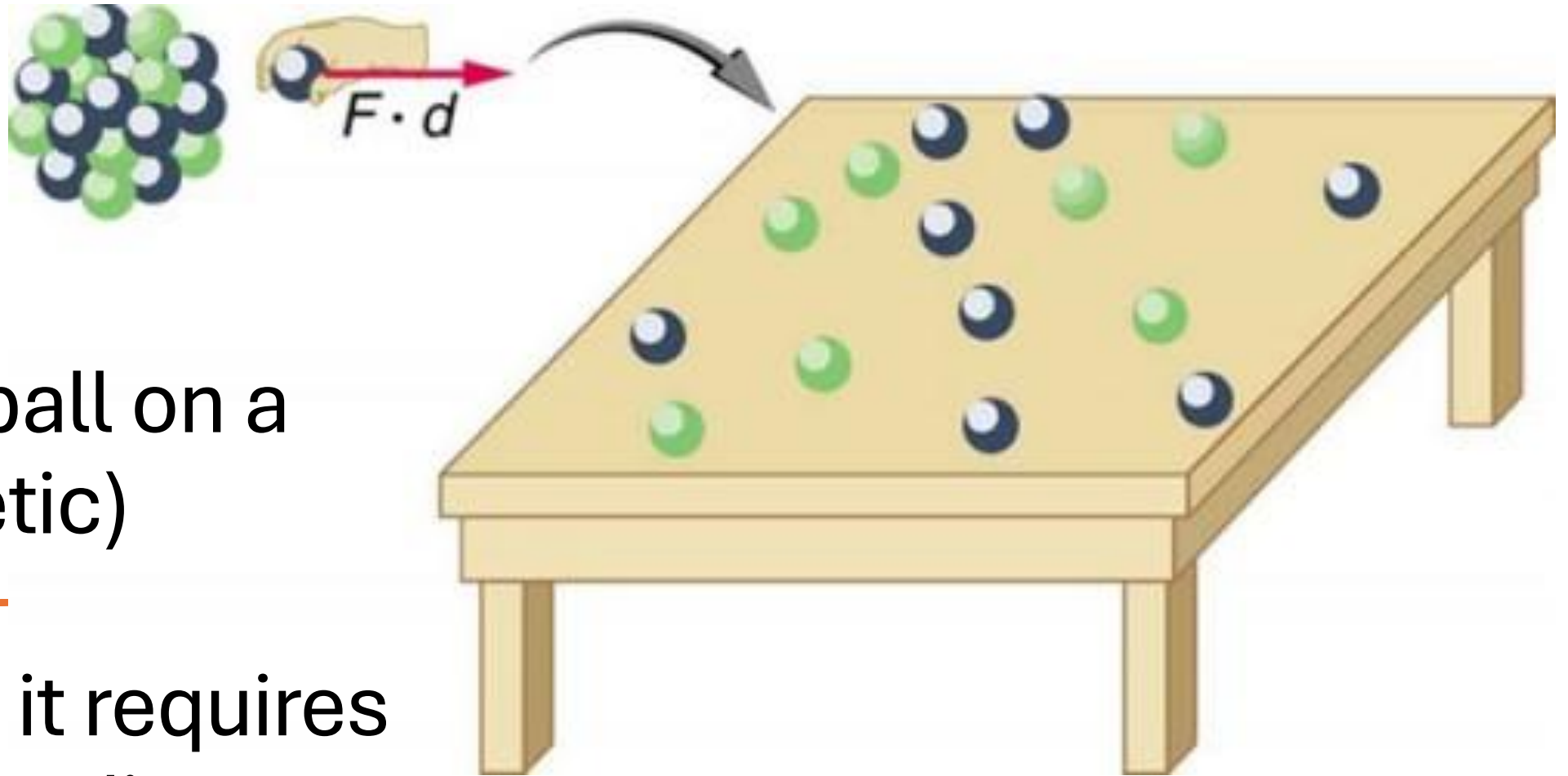
**Work = Force over a distance (say 5 feet)**

**Pushing a box on the floor or on a ramp is hard work and it uses our energy (kinetic)!**

**What's is Energy or Work**





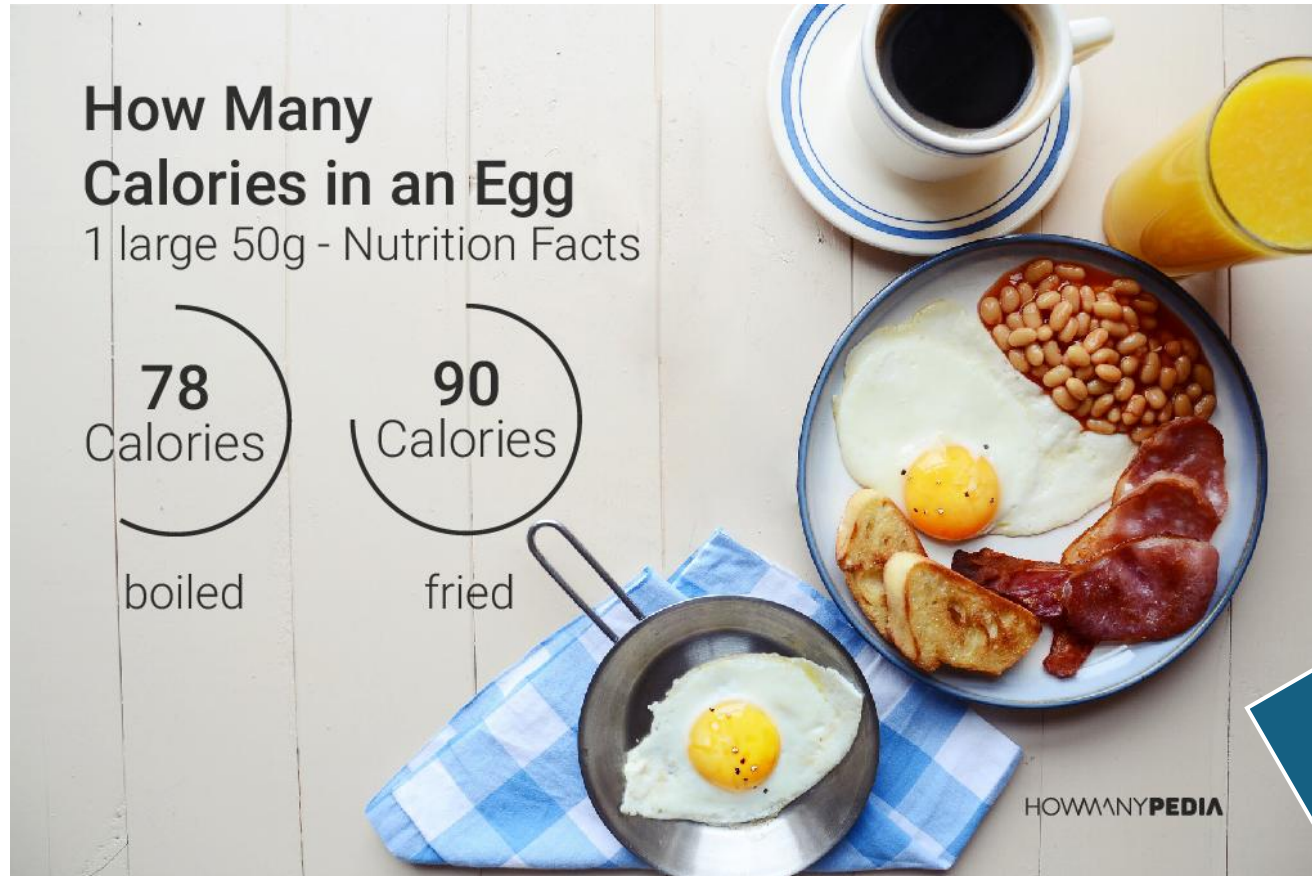


Placing a ball on a  
table (kinetic)

---

Or tossing it requires  
force over a distance

# FOOD is POTENTIAL ENERGY



Our energy comes from food

Food has calories

Food is potential energy

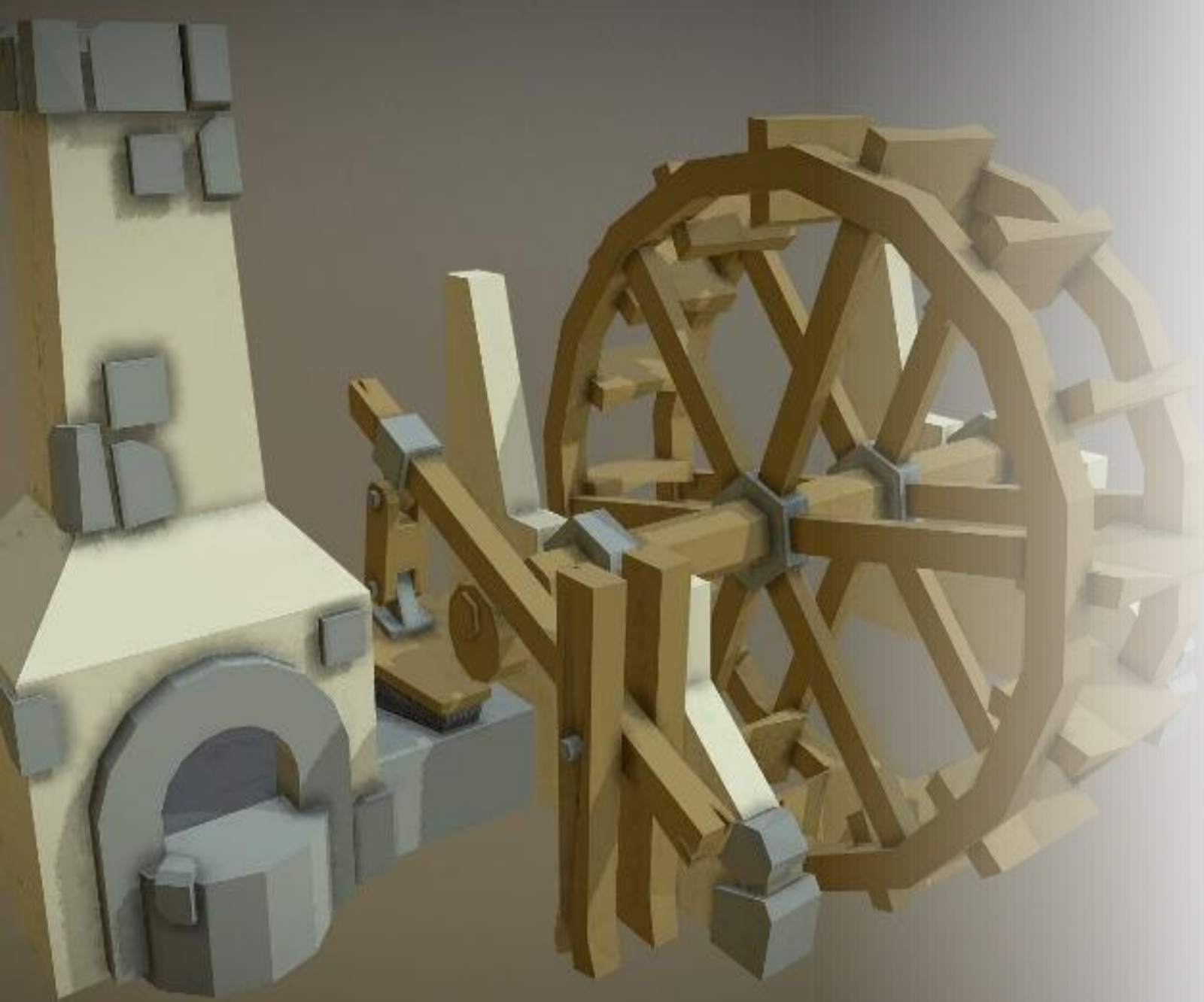
# Ancient Waterwheels DID WORK...

---

- Grinding Grain
- Milling Lumber
- Irrigation
- Delivering water to higher elevations for distribution through aqueducts or canals







We must remember, our ability to do work, our understanding of nature and science – all come from God

**John 8:32** *Then you will know the truth, and the truth will set you free.*

# HUMAN DESIGNS

Whether levers or paddles, wheels or gears, metal or wood, rods or axles, free or fixed – man is capable of creative design.



# Claims Denied:



Science says,  
"NO  
SUPERNATURAL  
causes"

Science says,  
"COMPLEXITY  
evolves from  
SIMPLICITY"

SCIENCE says,  
"SCIENCE is the  
source of  
TRUTH"



## REMEMBER THESE THINGS

**John 16:13a** *But when he, the Spirit of truth, comes, he will guide you into all the truth.*

"Wheels make the world go round" is a saying that means: there is **something** so important and essential that even ordinary things wouldn't happen without it. Think of all the ways our lives would be different without wheels, brakes, or anchors. There's no better place for the Lord to be than "at the wheel" of our own life.

