

[This Photo](#) by Unknown Author is licensed under [CC BY-SA](#)

SURVIVAL SCIENCE

LESSONS 3B

From Noah to Nimrod

- Noah's Lifespan ~950 years, he was alive when Ham begat Cush, and when Cush begat Nimrod
- Nimrod was Noah's great grandson
- Noah was still alive when the Tower of Babel was built



2 Peter 2:5 If he did not spare the ancient world, but preserved Noah, a herald of righteousness, with seven others, when he brought a flood upon the world of the ungodly

Ancient Ziggurats Nimrod's Folly



This Photo by Unknown Author is licensed under [CC BY-SA-NC](#)

Nimrod's Ideas were not Godly...

- **GENESIS 11:5-7** ⁵*But the Lord came down to see the city and the tower the people were building. ⁶The Lord said, “If as one people speaking the same language, they have begun to do this, then nothing they plan to do will be impossible for them. ⁷Come, let us go down and confuse their language so they will not understand each other.”*



Compare Noah's Success to Nimrod's Failure

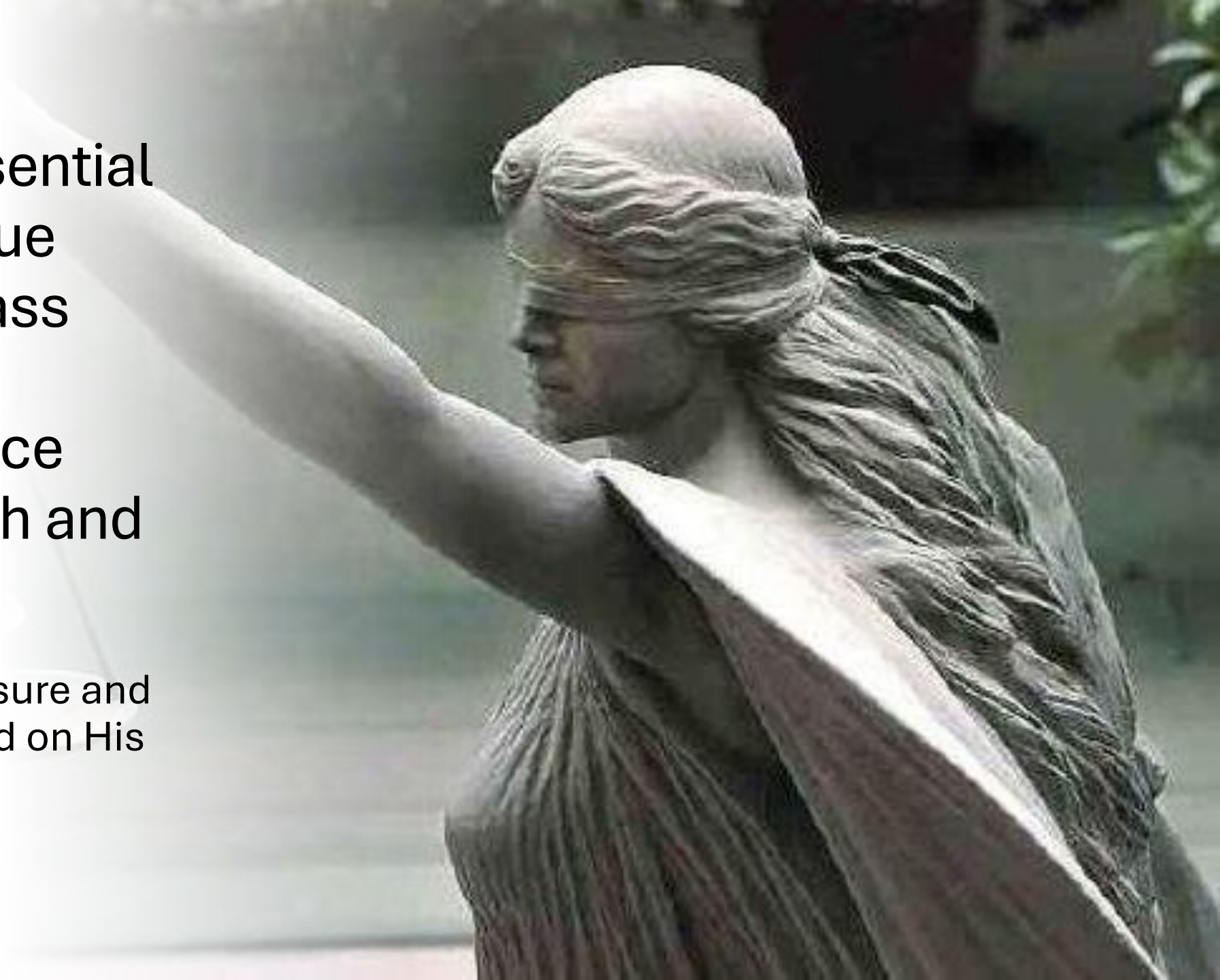


[This Photo](#) by Unknown Author is licensed under [CC BY-SA](#)

Scales are essential
to ascertain true
weight and mass

Scales of Justice
symbolize truth and
judgment

God tells us to measure and
choose wisely based on His
laws and statutes

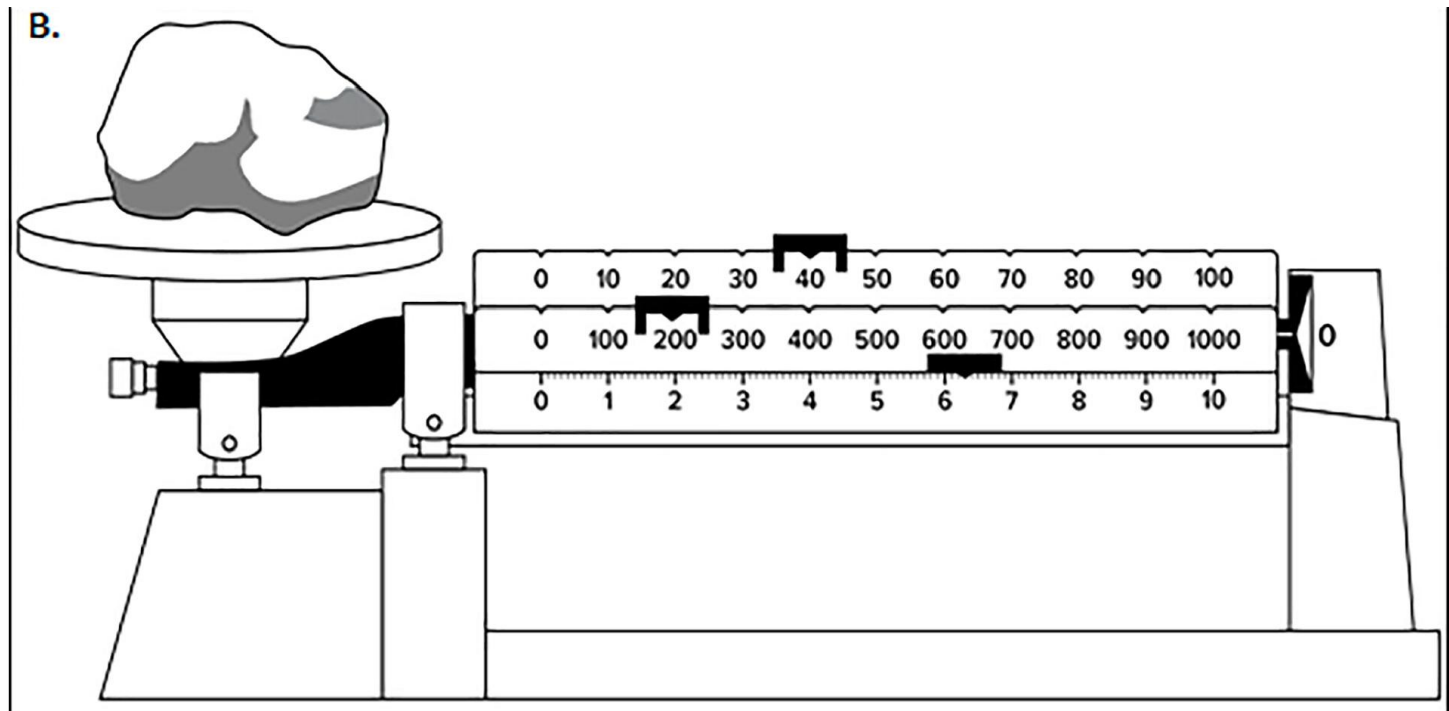


Base 10 Measurements

Scaler values are normally Base 10.

A scale (right) shows: 1's, 10's, 100's grams on separate beams.

Weight Measures



Triple Beam Balance Scales

1. Place object to be weighed on the scale.
2. Move the large weight first (middle beam).
3. Move the medium weight second (back beam)
4. Lastly, use the front weight to get the most precise weight value.



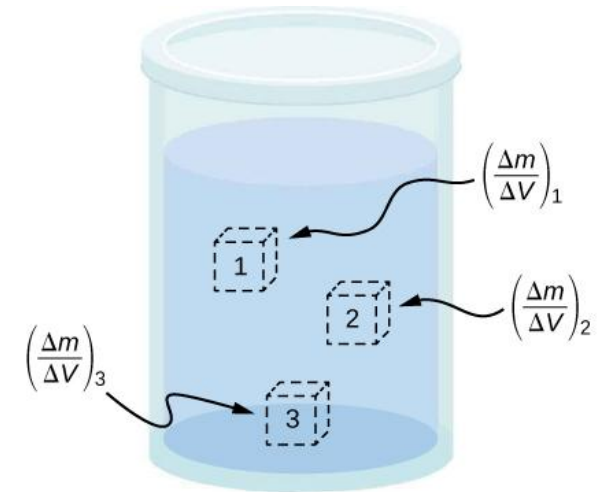
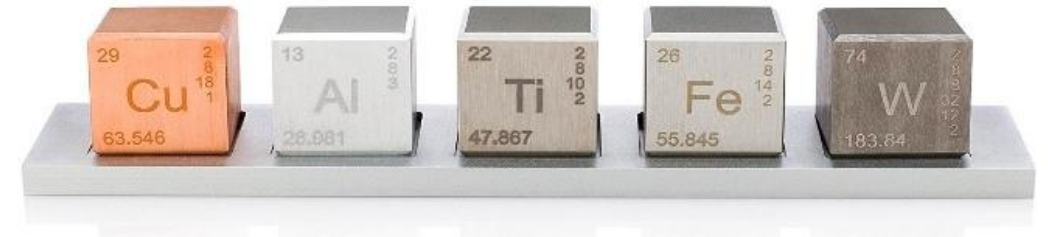


Using Density to Determine Composition

- Essential Characteristic of each Element
- Identification of Elements, Minerals, and Substances
- Affects behavior of substances in various mediums like water, oil, air, ocean water

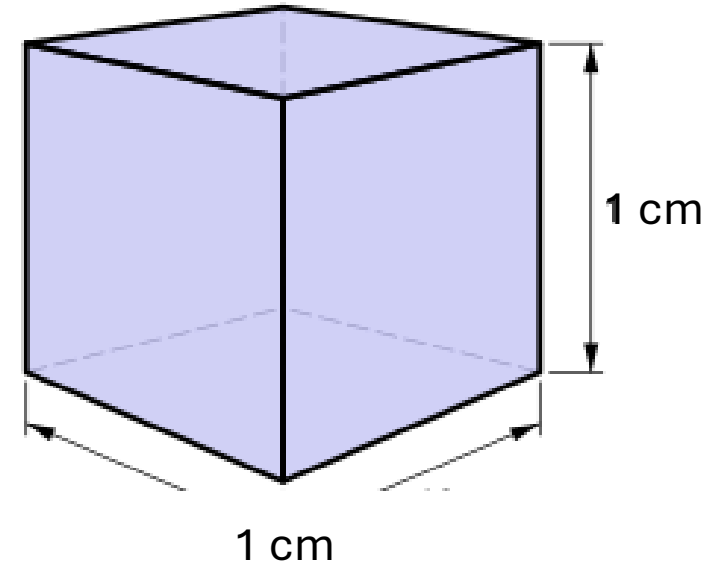
Elemental Densities

Element or Substance	Density in g/cc	Melting Temp in C
Gold	19.3	1063°
Platinum	21.45	1768°
Aluminum	2.7	660°
Silver	10.49	961.8°
Iron	7.874	1538°
Osmium	22.59	3050°
Lead	11.34	327.5°
Titanium	4.51	1668°
Water	1.0	0°
Silicate/Quartz Rock	2.65	1670°
Copper	8.96	1084°
Tin	7.31	232°



This Photo by Unknown Author is licensed under [CC BY](#)

Cubic Measures



[This Photo](#) by Unknown Author is licensed under [CC BY-SA](#)

LENGTH 1 cm
WIDTH 1 cm
HEIGHT 1 cm

Each cube is 1 cm³ or 1 mL

Finding Volume Measurement

Measurement	Base unit	
length	meter	(m)
mass	gram	(g)
volume	liter	(l)
time	second	(s)

[This Photo](#) by Unknown Author is licensed under [CC BY-SA-NC](#)



EXAMPLE: Final Vol – Initial Vol = Vol
19.8 mL – 17.1 mL = 2.7 mL

Finding Density

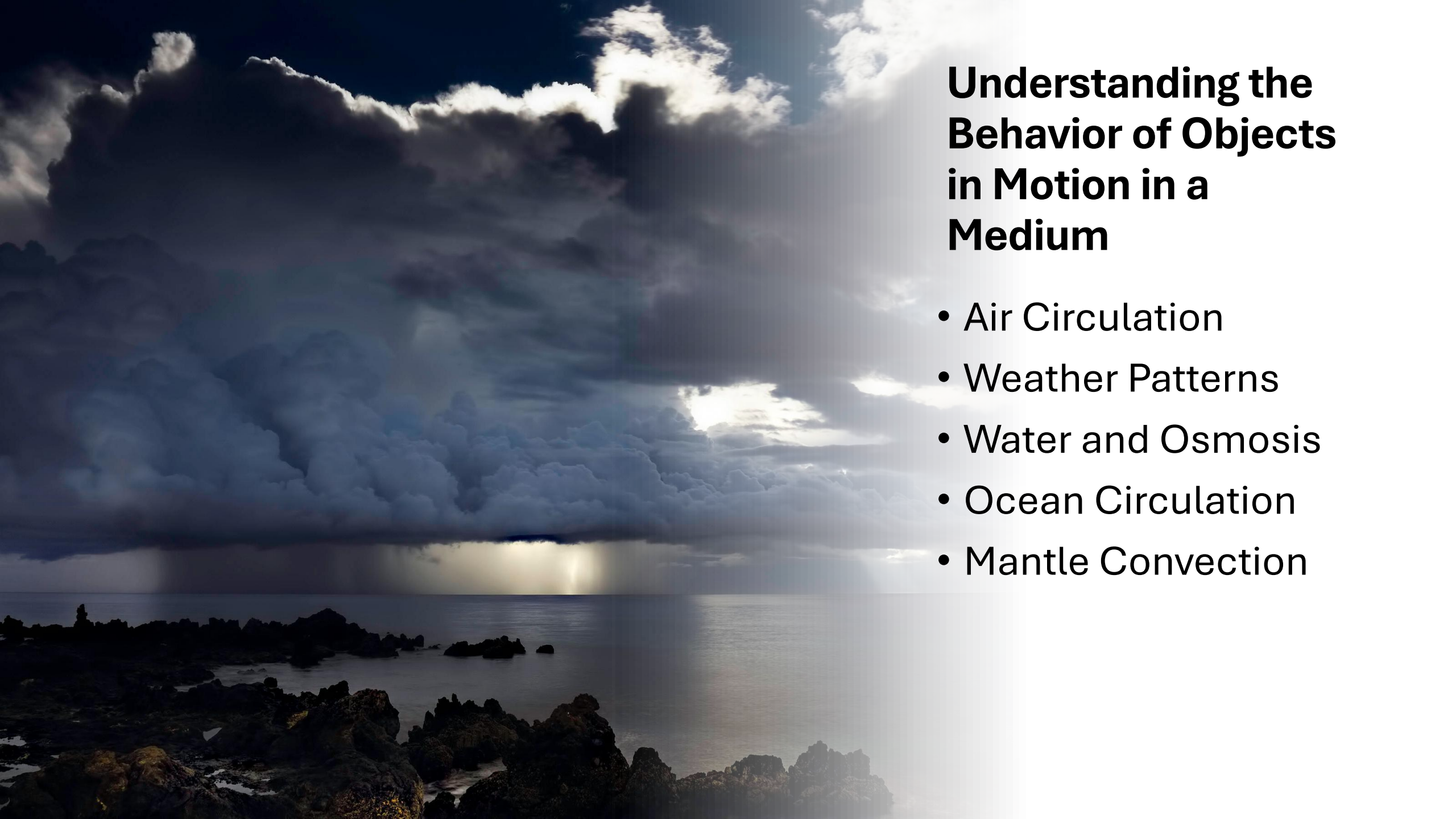
$$\text{Density} = \text{mass/volume}$$
$$\rho = m/v$$

Mass = 52.842 g
Volume = 2.7 mL

EXAMPLE: $\rho = 52.842 \text{ g}/2.7 \text{ mL}$
 $\rho = 19.2 \text{ g/mL}$

Likely a nugget of gold 19.3 g/mL with only a small amount of impurities





Understanding the Behavior of Objects in Motion in a Medium

- Air Circulation
- Weather Patterns
- Water and Osmosis
- Ocean Circulation
- Mantle Convection

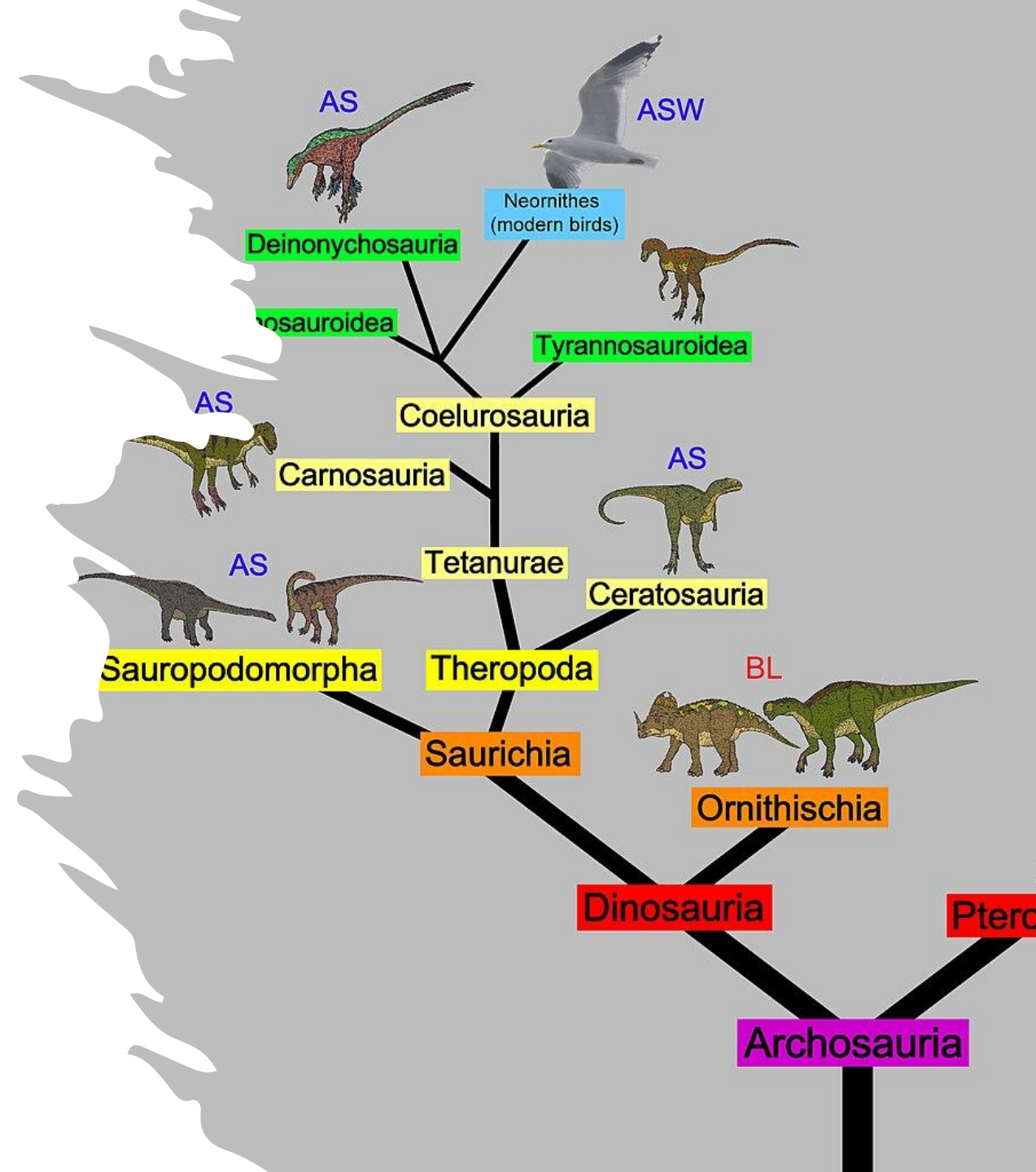
Good Science is Testable

- Can a Theorem be proven wrong – Falsifiable
- Is it Repeatable
- Can it be Tested or Verified



Apologetics and Science

- Theoretical Frameworks
 - Not Proven Scientifically
 - Not Subject to: Testable, Repeatable, Verifiable
- Not intended to become science law, merely an
 - Explanation
 - Speculation



REMEMBER THESE THINGS

SCALES of JUSTICE: (Scale)

Matthew 7:2 For in the same way you judge others, you will be judged, and with the measure you use, it will be measured to you.

“For I, the LORD, love justice; I hate robbery and wrongdoing. In my faithfulness I will reward my people and make an everlasting covenant with them.”
God is just; therefore, man who is created in God’s image has an innate desire for justice – both punishment and reward.

