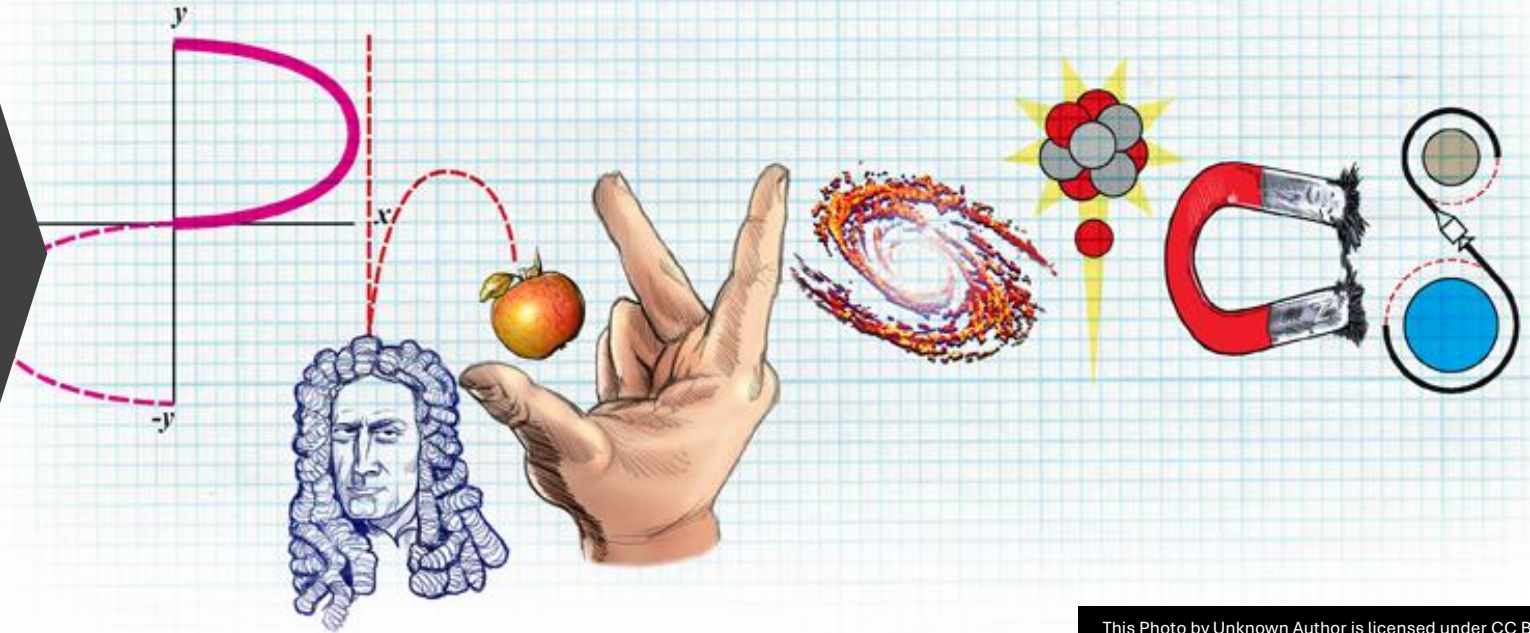


# SCENIC SCIENCE LESSON 3A

## OUR PHYSICS TIMELINE



This Photo by Unknown Author is licensed under CC BY-SA

## INVENTIONS THROUGH TIME

# After the Flood, a Rainbow Appeared

**GOD SAID...**



**GENESIS 9:11,13** <sup>11</sup> *I establish my covenant with you: Never again will all life be destroyed by the waters of a flood; never again will there be a flood to destroy the earth.* <sup>13</sup> *I have set my rainbow in the clouds, and it will be the sign of the covenant between me and the earth.*



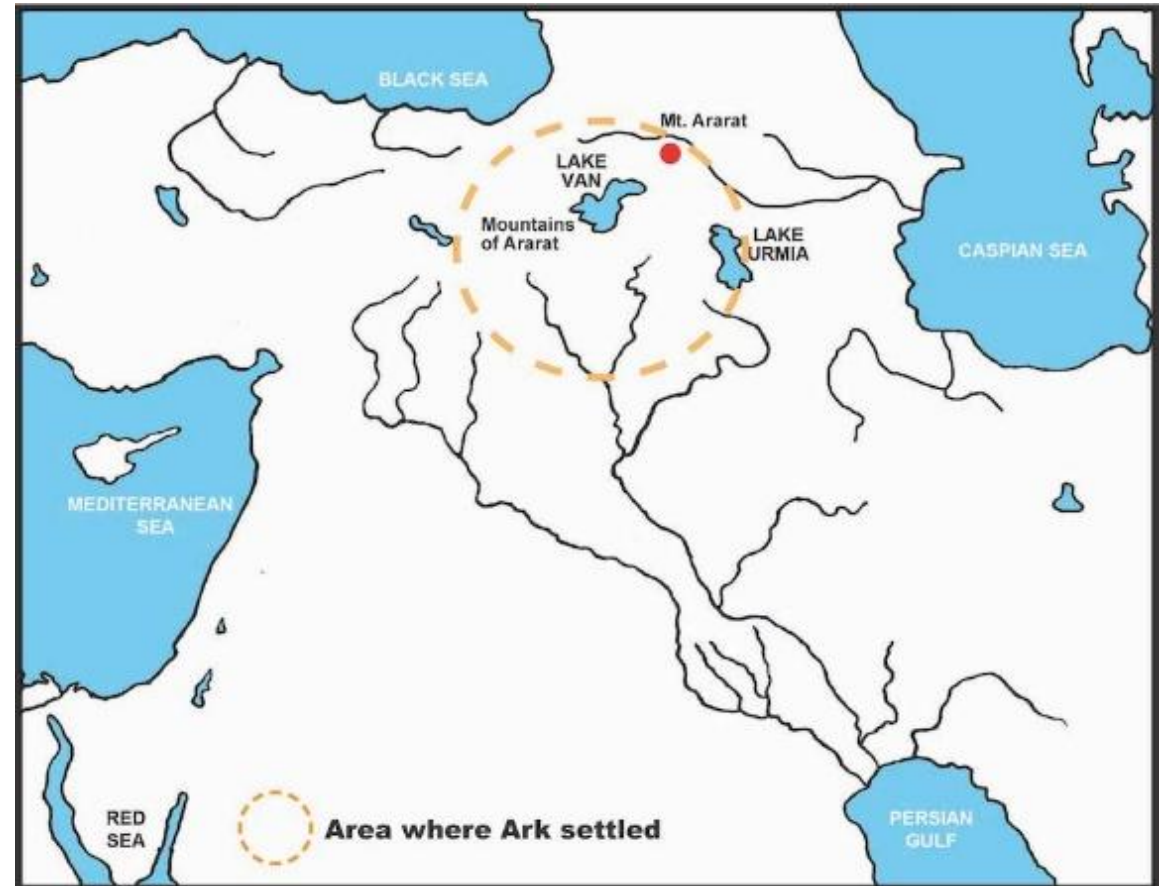
## Noah's Family Left the Ark

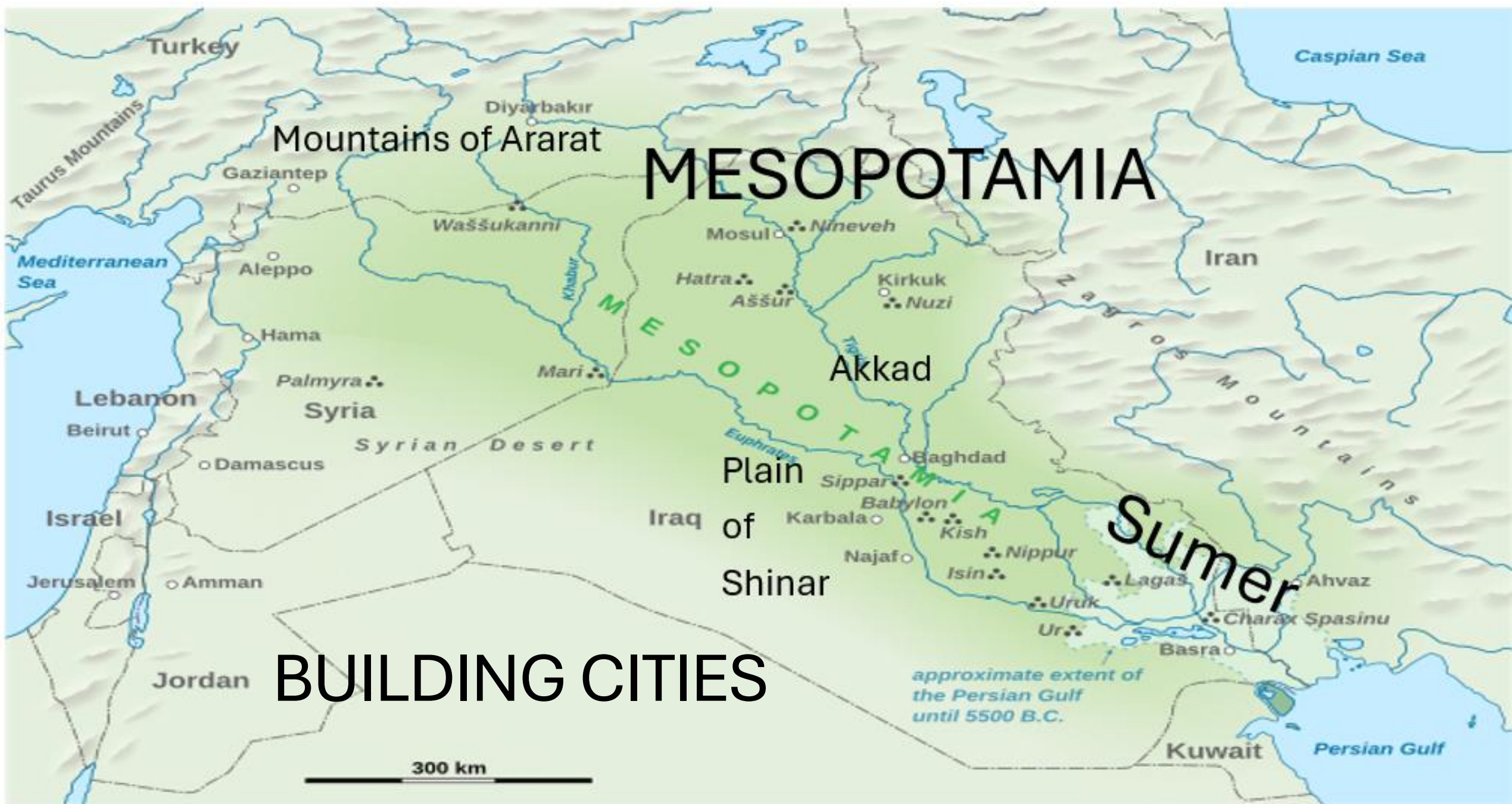
- The ark landed in the mountains
- The climate began to change

# IF... ice began to cover the Mountain Regions

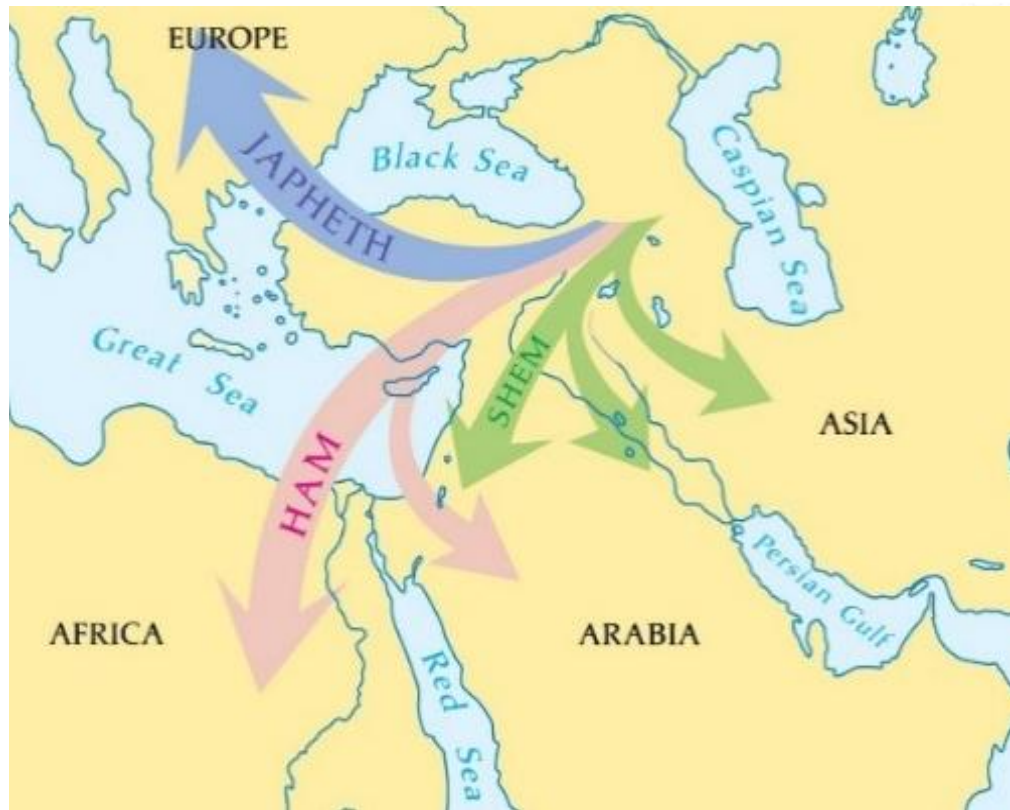
## Where would you go?

- Is it colder on mountain tops?
- Or at lower elevations?





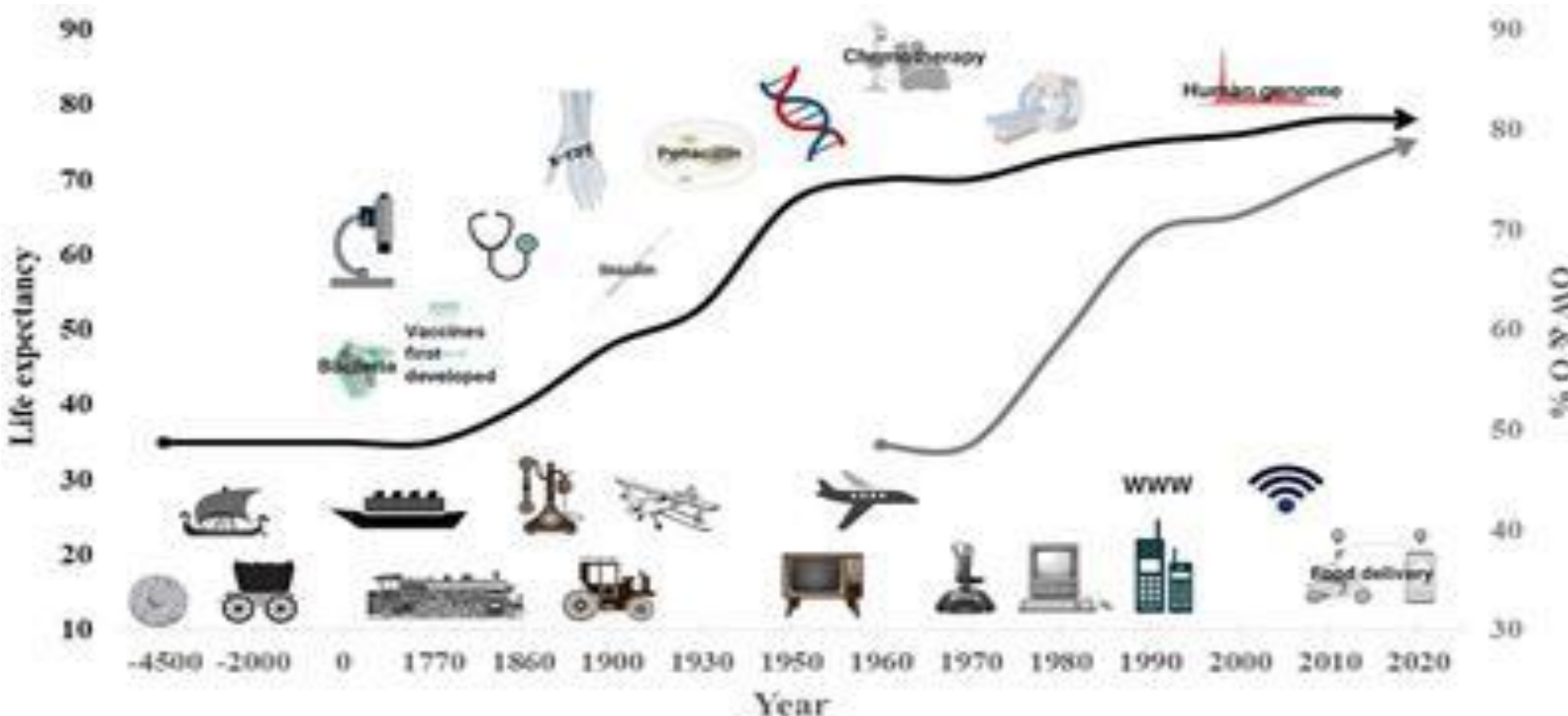
This Photo by Unknown Author is licensed under [CC BY-SA](https://creativecommons.org/licenses/by-sa/4.0/)



# TIMELINE

- 2500-2400 BC NOAH'S family survives the flood
- 2500-2400 BC SUMERIANS (Shem) build cities
- 2400-2300 BC THE TOWER OF BABEL

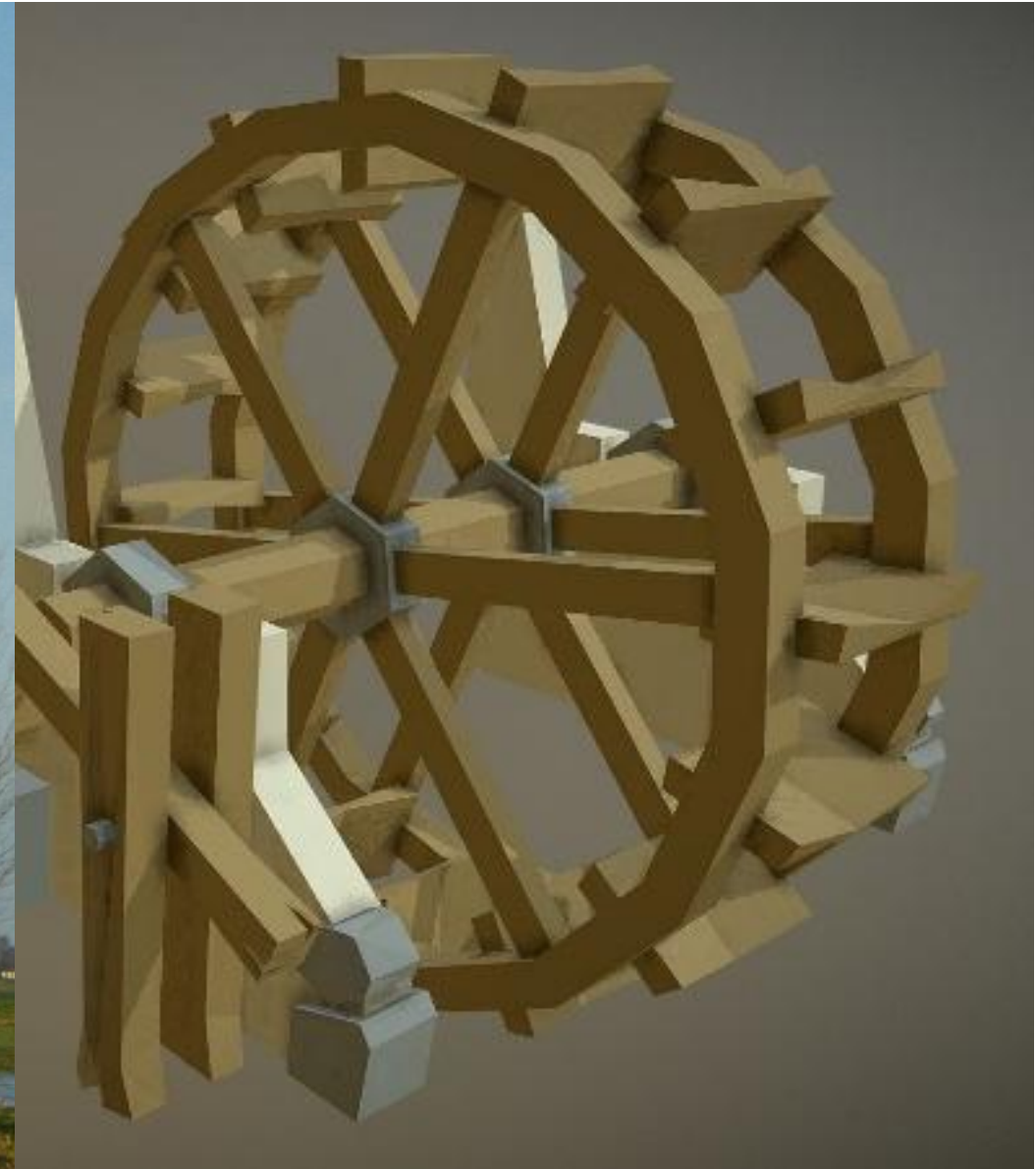
# INVENTION TIMELINE



This Photo by Unknown Author is licensed under [CC BY](https://creativecommons.org/licenses/by/4.0/)

# WHEELS & AXLES

Spin, Roll,  
Crank, Grind



THE ABILITY TO TURN ON AN AXLE MAKES  
SO MANY NEW THINGS POSSIBLE.





# Pottery Wheels





# CONTAINERS

# SIMPLE TOOLS

**CONTAINERS** – channels to contain water/aqueducts, pans, pots, measuring trays, scales, and paddles or buckets.



# Brick and Mortar Cities, Tombs, Temples

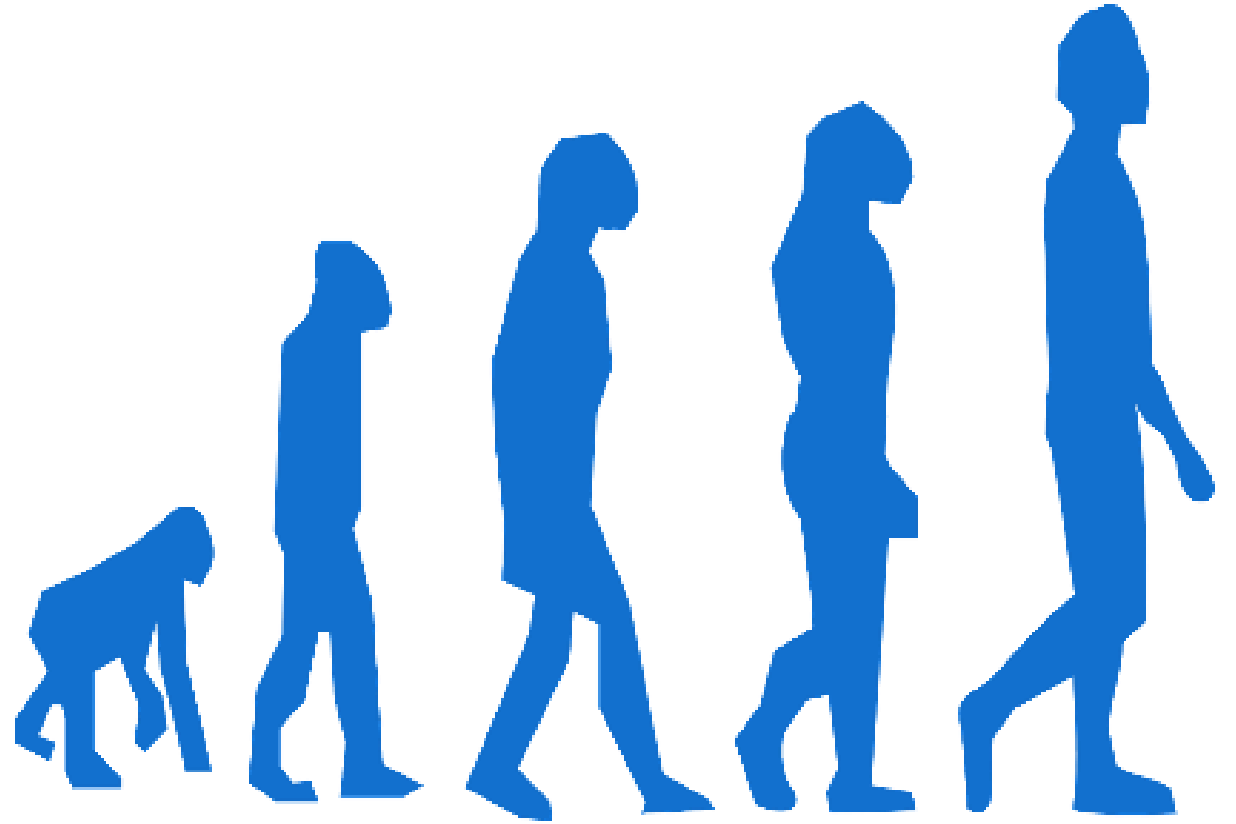
Many Temples were  
constructed and  
soon false gods were  
Worshipped; not the  
God of Noah or  
Adam



Foolish  
Imaginations –  
Worshiping the  
Creature rather than the  
Creator

They gave up the truth about God  
for a lie, and they worshiped  
God's creation instead of God,  
who will be praised forever.

Amen. Romans 1:25





## REMEMBER THESE THINGS

**Romans 1:10** None are righteous, no not one.