

THE MEASURE OF A “MAN”

INTRODUCTION:

After the Fall, the world and everything in it was different. Like a flu bug or virus, sin affected every creature. Even the animal kingdom suffered man’s unwillingness to listen to God’s instruction, “do not eat of the tree or you shall surely die.” (paraphrased) Adam died when he was 930 years, much longer than anyone lives today; but God intended mankind and animals to live in fellowship with Him always.

After nearly 1000 years of living on Earth, wickedness was everywhere. All the inhabitants were called to repent or face judgment. Only Noah and his family were righteous and trying to live as God intended. Although much had changed since the Days of Creation and the Fall, God’s call for mankind remained the same: Listen to my Word/Instruction, Trust and Obey.



[This Photo](#) by Unknown Author is licensed under [CC BY-NC-ND](#)

Is it possible, God could call you to such a great task that your future or others may be at stake? Certainly! Your neighbor, friend, or family member may need you to tell them what God has said in His Word. It could change their life.

PROVERBS 8:33 Listen to my instruction and be wise; do not disregard it.

DEVOTIONS: GENESIS CHAPTERS 6-9

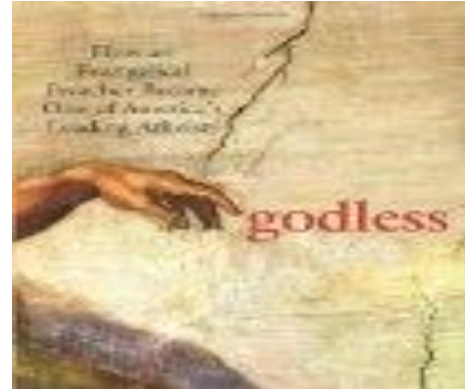
1 PETER 3:20 “...because they formerly did not obey, when God’s patience waited in the days of Noah, during the building of the ark, in which a few, that is, eight persons were saved through water.”

Methuselah, whose name means *his death brings judgment*, was Noah’s grandfather. He lived during Adam and Eve’s lifetime; he was alive when God told Noah that mankind had 120 years to change and turn from their wicked ways before judgment would come. In Genesis 5:27, it tells us Methuselah died at age 969 years, near Noah’s 600th birthday. Methuselah’s death indeed signaled the coming flood that same year.

Imagine God's longsuffering, enduring the pain and remorse caused by mankind's wickedness – killing one another, making human sacrifices, teaching idolatry to their children and their children's children – how could it or would it end! The only thing worse than death was wickedness. Wickedness destroys everything even as it lives.

GENESIS 6:6 God is grieved after the spread of wickedness before the flood.

Adam and Eve, though they had been warned of judgment, chose to *bring on* death because they didn't believe God's words, "you will surely die." Fortunately, Noah chose to believe God's words, or he would never have finished the ark. Although Noah himself sinned, his faith in what God told him was unwavering.



PROVERBS 8:33 Listen to my instruction and be wise; do not disregard it.

God grieved over man's wickedness and its cost, but He fulfilled the promised judgment. Only Noah's family survived. Everything else with the breath of life, except the animals God brought to the ark, was lost. You are alive today because you are a descendant of Noah and a beneficiary of his faith.

God measured Noah's faith and righteousness with His amazing grace. Our only hope is to be measured in Christ. Like the ark, Christ is available to all who'll believe God's word. Only Christ can bear us safely home across the great divide caused by sin. Throughout the scriptures, God reminds us of His plans to bring redemption. Noah was not without sin, but his faith in the One who knew no sin, made all the difference.

HEBREWS 11:7 By faith Noah, being warned of God concerning things not yet seen, was moved with godly fear to prepare an ark for the saving of his household through which he condemned the world and became heir of the righteousness which is according to faith.

DEFINITIONS:

VECTORS – generally shown as arrows, illustrate magnitude and direction

WEDGE – a piece of wood, metal, or some other material having one thick end and tapering to a thin edge

FULCRUM – an object/point on which a lever rests and pivots

DIMENSIONS – measurable extent of some kind, such as length, breadth/width, height/depth.

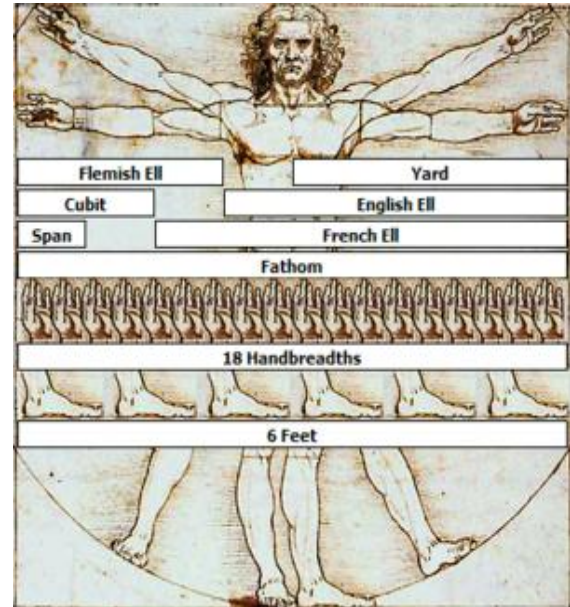
CUBITS – a distance equal to the length of a man's forearm, from elbow to the end of the middle finger which was approximately 18 inches. It was used in the Old Testament at the time of Noah, Abraham, and Moses.

BASE 10 – refers to decimal and powers or any change in value by an order of 10's (x 10's)

STANDARDS – universally accepted units of measurement with fixed values.

THEME – The Measure of a Man/Woman

How does God measure us? We were given a choice to live as we were designed to live in fellowship with God, listening to His Word, or to live as those who choose to listen only to themselves, using their own measures: power, wealth, status, human knowledge, or any other measure opposed to God's. It's important to choose rightly.



Mark 4:24

"And he said unto them, Take heed what ye hear: with what measure ye mete, it shall be measured to you: and unto you that hear shall more be given".



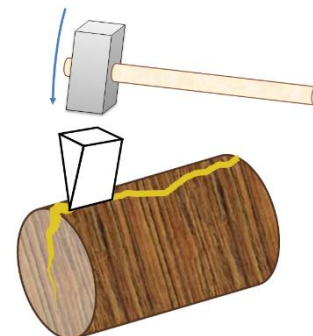
TIMELINE (History): 4000 BC – 2400 BC (to the Flood) called the BRONZE AGE:

Based on Biblical chronologies and genealogies, it appears that construction of the ark began approximately 4500 years ago, around 2500 BC. Tools and simple machines were a must for building.

Before the flood, mankind was already working with metals. Tubal-cain (a descendent of Cain) is mentioned in Genesis

4:20-22 as a maker and teacher of bronze and iron or brass metalsmithing. Metalwork tools like shovels, rakes, knives, axes, and wheels were made. One of the essential designs was a metal **WEDGE**.

Methuselah lived during Adam's lifetime, as well as during Tubal-cain and Noah's lifetimes. He lived longer than any person, 969 years. He was Noah's grandfather and Enoch's grandson. Enoch was a righteous man who walked with God and never died.



As communities, cities, and civilizations grew, the need for measures also grew. Trade is difficult unless a standard of trade exists. People needed to know distances between cities, rivers, water wells, or places of commerce like the nearest forge or blacksmith, shipbuilder, quarry, or vineyard. Relatively consistent lengths were developed with standards (a rod, a chain, a stadia).

The Egyptian civilization may have been the first to use boats, on the Nile. About the time God gave Noah specific instructions and measurements to build a massive boat, the Egyptians were building seaworthy boats that were much, much smaller. To build such an immense boat, Noah needed to understand the measure of these lengths. The ark would be the largest wooden structure ever built at that time. It needed to be seaworthy.

The Ark's dimensions –

300 cubits = ~135 meters
 50 cubits = ~23 meters wide
 30 cubits = ~14 meters tall. Noah needed accurate measurement standards.



Constructing a boat large enough to house all the land animals God created during creation week was a God-sized task. Good workmanship would be required as would discipline, work, and loads of energy. Without God's help and simple tools/machines, this project would be impossible.

EQUIPPED/Science Principle:

The METRIC SYSTEM is a measurement system that uses a BASE UNIT and a prefix. We use it in science and commerce. It has weight, length, volume, temperature, and capacity measures.

Measurement	Base unit	
length	meter	(m)
mass	gram	(g)
volume	liter	(l)
time	second	(s)

[This Photo](#) by Unknown Author is licensed under [CC BY-SA-NC](#)

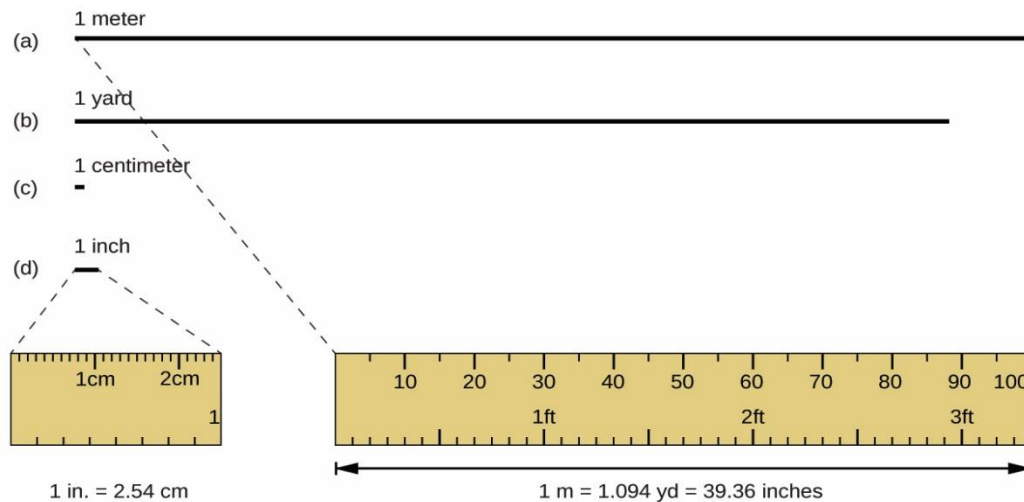
Base units, shown here to the right, are grams, meters, liters, and seconds although seconds are not metric only, they are used internationally for time.

GEAR-UP/Practical Illustration:

To understand metric measures, a ruler with both English and metric measures is a great tool. Note that 1 inch = 2.54 centimeters and on a meterstick

(3 feet + 3.36 inches) 1 meter = 1.094 yards or 39.36 inches.

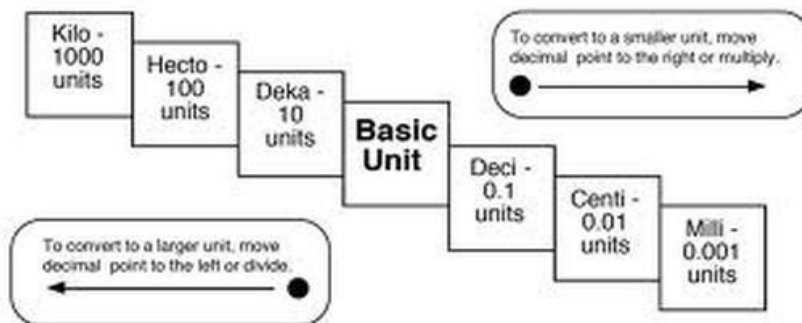
A picture is a great way to view the difference, but don't be fooled by the "scaled lines." One meter can't be shown on one page of a book or worksheet; so this picture illustrates some relative comparisons.



[This Photo](#) by Unknown Author is licensed under [CC BY-SA-NC](#)

OVERCOME/Math:

Metric Conversion Chart



[This Photo](#) by Unknown Author is licensed under [CC BY-SA](#)

LET'S LOOK AT A RULER:

Using your ruler, **find** the following measures.

A millimeter
A centimeter
A decimeter

Deci for 1/10th; Centi for 1/100th; Milli for 1/1000th
of a meter.

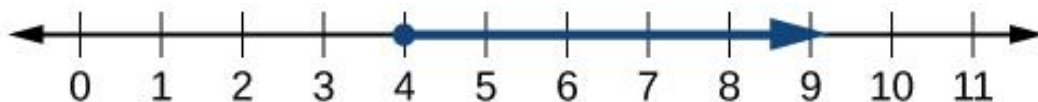
On your worksheet:

Figure out the size order of the metric measures: a millimeter, centimeter, and decimeter. Determine the measures of all dimensions of a cube.

WHAT ARE DIMENSIONS

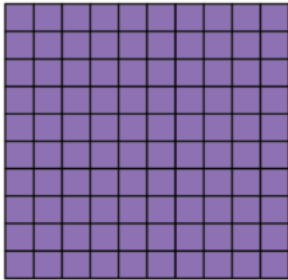
1 dimension = a line, 2 dimensions = a square, and 3 dimensions = a cube.

PROBLEM (1 Dimension): What is the answer for this line problem: $4 + 5 =$ _____



PROBLEMS (2 Dimensions): Find the measure of a square.

A square is the sum of each row of squares. If a single row = 10 squares, like below, then the total number of squares is the sum of all the rows. Counting by 10 that number equals 100 squares.



1 hundred

**Squares are 2 DIMENSIONS and are measured in square units.
Calculate 2 Dimensions:**



This Photo by Unknown Author is licensed under [CC BY](#)

PROBLEM: What are the total number of square units in the two images above:

Equation: 100 sq units + 10 sq units = _____
Be sure to report as sq units.

PROBLEM: Find the various measures of a cube!

Measure the total square units of the cube →

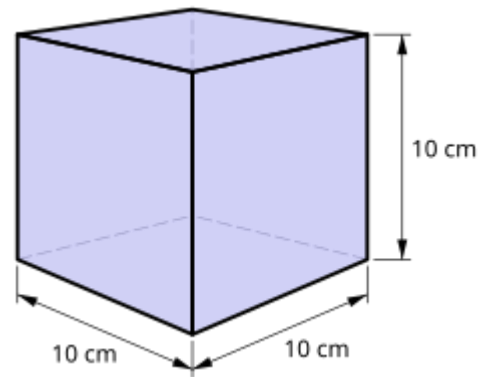
What is the **length** of the sides: _____ cm

What is the **width** of the sides: _____ cm

What is the **height** of the sides: _____ cm

What is the **area** of a side (sq cm): _____ sq cm

10 cm x 10 cm = _____ sq cm (count by 10 tens 10 times)



PROBLEM (3 Dimensions): What is the volume of the cube? (count by 100 ten times)

10 cm x 10 cm x 10 cm = _____ cubic cm or _____ cm³

GOT-IT/Apologetics:

By estimating the volume of the ark using the dimensions given in the Bible, we can calculate its volume, its buoyancy, its capacity, and sea worthiness. Although it's relatively simple math, the answer reveals something incredible. Based on the Genesis record, the volume of the ark was equal to the capacity of 450 semi-trailers or 570 railroad cars. This is more than adequate space to house all the diverse kinds of animals aboard the ark. Therefore, the ark measures from ~4500 years ago and the engineering instructions for a floating barge are evidence for the HOPE or faith we hold. It's also a very reasoned answer for how and where the fossil record originated.

Today nearly all scientists believe, and evidence shows, that water covered the majority of all the land/continents; however, these same scientists refuse to believe a global flood ever occurred. Most of the fossil/rock record is accepted as flood deposits, but these scientists assume these must be from multiple local floods, not a global flood. The Bible calls out “willingly ignorant” or “deliberately forgetful” scoffers who deny the flood.

We also need to be careful not to believe Noah’s ark looked like the picture below. There are many storybooks with images of animals far too big and boats far too small. Actual measures from the Bible’s account provide us with a much better model than these storybook images.

2 Peter 3:3-7

³Above all, you must understand that in the last days scoffers will come, scoffing and following their own evil desires. ⁴They will say, “Where is this ‘coming’ he promised? Ever since our ancestors died, everything goes on as it has since the beginning of creation.” ⁵But they deliberately forget that long ago by God’s word the heavens came into being and the earth was formed out of water and by water. ⁶By these waters also the world of that time was deluged and destroyed. ⁷By the same word the present heavens and earth are reserved for fire, being kept for the day of judgment and destruction of the ungodly.



This Photo by Unknown Author is licensed under CC

REFLECTION/Devotion:

Methuselah’s name was a reminder to Noah that judgment was coming. Perhaps this helped Noah be prepared. Fortunately, for Noah, he listened to the precise instructions he received from God and worked diligently. A boat’s dimensions make all the difference in seaworthiness, its ability to sustain turbulent waves, and its adequate capacity to carry the payload. His workmanship and obedience allowed our civilization to continue.



Land animals, created on Day 6, were not created to die, be sacrificed, or to be used for food. They were created very good, eating the fruit of the land, not each other. It’s unclear when animals themselves became carnivorous; however, after leaving the ark, some animals and Noah’s family ate meat. It’s apparent we live in a fallen world (judgment and death from Adam’s fall), a post-diluvian world (a fossil-filled rock record), and a world that is no longer very good. Yet, we can see evidence of God’s grace all around us.

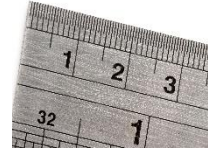
(Methuselah – the oldest living thing/tree, dates to just after the flood)

REMEMBER THESE THINGS

Throughout our lessons, remembering what we learn is key to understanding.

MEASURE: (a ruler)

We should measure our lives, not as man would, but as God does. Too often we'll find ourselves following the crowd, or valuing what others believe is important, such as "keeping up with the Jones's." Learn to rightly measure, as Noah did, so you don't miss the boat when God is seeking you to fulfill a mission or calling.



LUKE 6:8 A good measure, pressed down, shaken together, running over, will be put into your lap; for the measure you give will be the measure you get back.



INSTRUCTION: (A BOAT)

A BOAT is known around the world as the way man survived a flood. The stories vary but most say only one family survived. As support for an epic flood, they give credence to the record in Genesis; but, as credible accounts, they fail to be accurate. Their boat descriptions fail to be seaworthy, fail to be sufficient in capacity, or fail in their ability to withstand turbulence. Only the Biblical account of the actual ark passes the credibility test. The description of the boat/ark provided in Genesis is clear, measured, and set within a historical record. The mathematical calculations, structural integrity based on its dimensions, and added descriptions provide evidence for the Bible's voracity.

PROVERBS 8:33 Listen to my instruction and be wise; do not disregard it.

GENESIS 7:1a And the LORD said unto Noah, Come thou and all thy house into the ark.